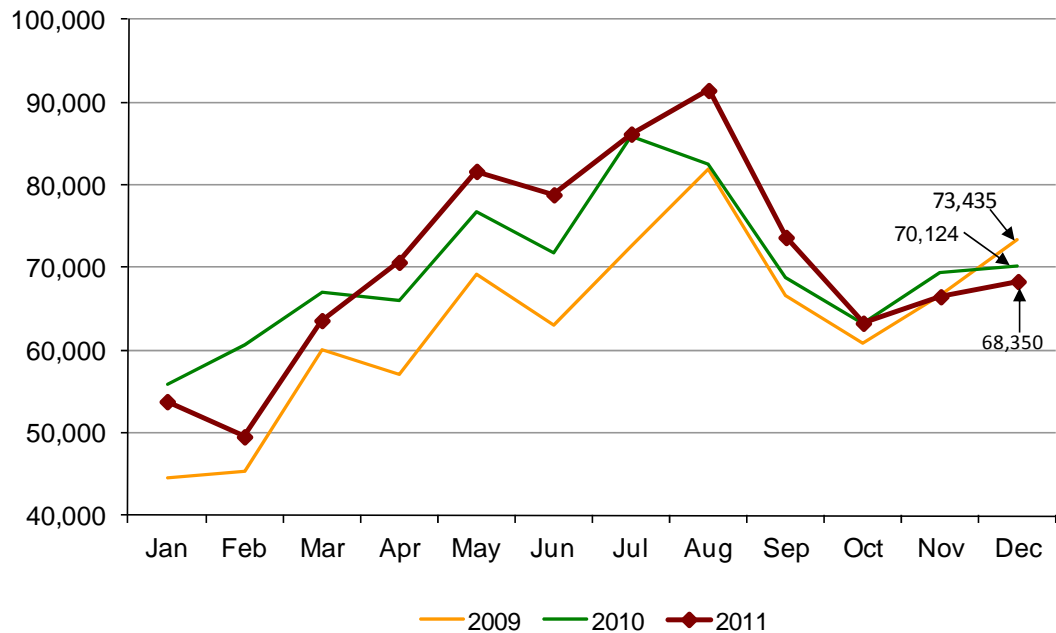


Amtrak Cascades Monthly Data Ridership Report – December 2011

Ridership

Passengers



December 2011's ridership is a 2.5 percent decrease from December 2010 and a 6.9 percent decrease from December 2009.

Monthly Ridership by Funding Agency

Amtrak *Cascades* operations are funded by the states of Washington and Oregon and Amtrak. This table provides a breakdown of ridership by funding agency.

Funding Agency	December					
	2011		2010		2009	
	Riders	%	Riders	%	Riders	%
Washington	46,708	68.3	46,751	66.7	49,953	68.0
Oregon	11,055	16.2	11,910	17.0	11,433	15.6
Amtrak	10,587	15.5	11,463	16.3	12,049	16.4
Totals	68,350	100.0	70,124	100.0	73,435	100.0

Year-to-Date (YTD) Summary

YTD	Ridership	Passenger Miles	Ave. Trip Length (miles)
2011	847,709	134,355,097	158.5
2010	838,251	132,561,019	158.1
2009	761,610	117,888,924	154.8

Monthly Ridership by Train for November

Train #	Sponsored By	Route	Ridership	Percent Change 2010 to 2011
500	Amtrak	Portland to Seattle	5,636	0.3
	Oregon	Eugene to Portland	2,607	-5.2
501	Washington	Seattle to Portland	5,533	-1.0
506	Washington	Portland to Seattle	6,325	-8.4
504	Oregon	Eugene to Portland	3,549	-8.9
507	Washington	Seattle to Portland	4,570	-6.8
	Oregon	Portland to Eugene	2,889	-3.4
508	Washington	Portland to Seattle	4,823	3.0
509	Amtrak	Seattle to Portland	4,951	-9.4
	Oregon	Portland to Eugene	2,010	-11.6
510	Washington	Seattle to Vancouver, BC	3,546	5.5
513	Washington	Vancouver, BC to Portland	10,096	2.0
516	Washington	Portland to Vancouver, BC	8,749	0.9
517	Washington	Vancouver, BC to Seattle	3,066	11.8
Bus*	Washington	Seattle to Bellingham	2,011	8.6

* Actual ticket lift.

Train Disruptions

Train disruptions are when a specific Amtrak *Cascades* train is cancelled, terminated, or annulled.

Date	Train #	Disruption	Type	State
12-20	504	Track Work	Cancellation	OR

Station On-Offs*

Station	On	Off	Total	% Increase/ Decrease from December 2010 Total
Albany	1,169	963	2,132	2.7
Bellingham	2,849	2,417	5,266	-1.9
Centralia	884	862	1,746	9.7
Edmonds	1,115	1,113	2,228	17.9
Eugene	3,221	2,267	5,488	-7.4
Everett	1,203	1,081	2,284	8.5
Kelso/Longview	1,019	1,042	2,061	-6.6
Mt. Vernon	829	815	1,644	7.1
Olympia/Lacey	2,174	2,288	4,462	4.9
Oregon City	389	519	908	4.7
Portland	19,885	20,424	40,309	-0.2
Seattle	18,414	19,032	37,446	-0.3
Salem	1,711	1,628	3,339	-7.9
Stanwood	195	221	416	-4.1
Tacoma	4,162	4,112	8,274	-8.2
Tukwila	1,120	1,299	2,419	11.2
Origin/Destination Unidentified**	16	16	32	-99.0
Vancouver, BC	4,848	4,821	9,669	7.1
Vancouver, WA	3,075	3,358	6,433	-4.5
RailPlus***	72	72	144	2.9

Amtrak did not provide Deferred ridership numbers for December.

- * Station On-Offs are used to record how many passengers got on the train or got off the train at each station.
- ** Origin/Destination Unidentified includes Deferred and Unknown riders who get off and on at unidentified destinations. Deferred riders are those that purchase their tickets and then “defer” their trip to a future date. Unknown riders are those that Amtrak did not identify in the system.
- *** RailPlus – passengers transferring from Sound Transit to Amtrak Cascades.