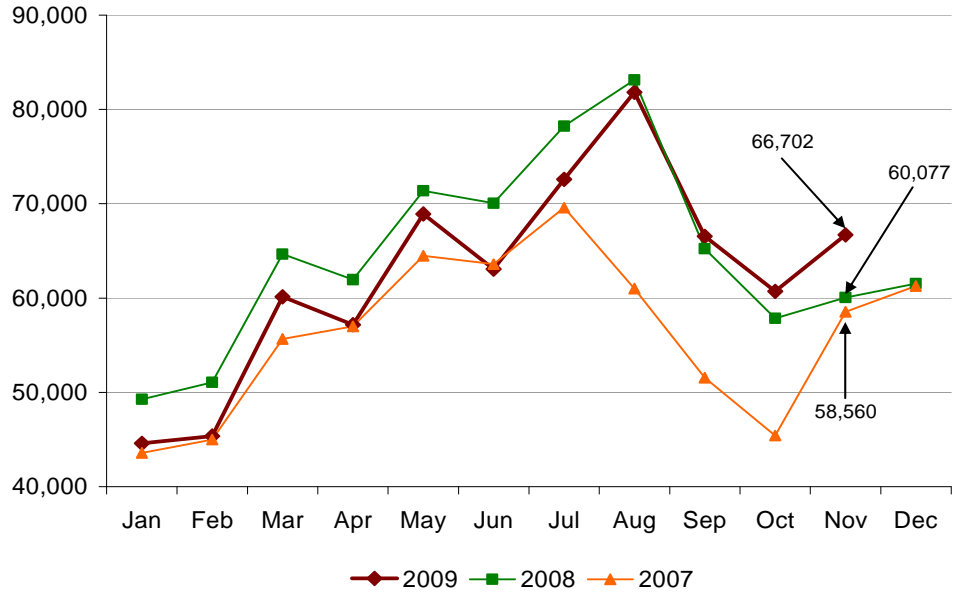




Amtrak Cascades Monthly Ridership Report – November 2009

Ridership

Passengers



| Train # | Train Route | Percent of Change | |
|---------|---------------------------|-------------------|--------------|
| | | 2008 to 2009 | 2007 to 2009 |
| 500 | Eugene to Seattle | 1.3 | 11.4 |
| 501 | Seattle to Portland | 21.7 | 17.1 |
| 504 | Eugene to Portland | 10.7 | -15.3 |
| 506 | Portland to Seattle | 5.0 | 5.6 |
| 507 | Seattle to Eugene | 8.5 | 11.7 |
| 508 | Portland to Seattle | 10.1 | 6.6 |
| 509 | Seattle to Eugene | 2.9 | 13.5 |
| 510 | Seattle to Vancouver, BC | 16.8 | 11.5 |
| 513 | Vancouver, BC to Portland | 22.8 | 39.1 |
| 516 | Portland to Vancouver, BC | 18.6 | 28.8 |
| 517 | Vancouver, BC to Seattle | 4.0 | -3.9 |
| Bus | Seattle to Bellingham | 12.4 | N/A |

- Overall ridership increased 11.0 percent from 2008, and 13.9 percent from 2007.

| Types of Delays | # of Incidents |
|-----------------|----------------|
| Mud Slides | 8 |

- Mudslides were on BNSF tracks in Washington.

Monthly Ridership per Funding Agency

Amtrak *Cascades* operations are funded by the states of Washington and Oregon and Amtrak. This table provides a breakdown per funding agency.

| Agency | November | | |
|--------------------------|----------|--------|--------|
| | 2009 | 2008 | 2007 |
| Washington Funded Trains | 44,292 | 38,951 | 37,518 |
| Oregon Funded Trains | 9,953 | 9,357 | 9,880 |
| Amtrak Funded Trains | 12,457 | 11,769 | 11,162 |
| Route Totals | 66,702 | 60,077 | 58,560 |

Year-to-Date (YTD) Summary

| YTD | Ridership | Passenger Miles | Ave. Trip Length (miles) |
|------|-----------|-----------------|--------------------------|
| 2009 | 687,638 | 106,517,723 | 154.9 |
| 2008 | 712,889 | 109,866,535 | 154.1 |
| 2007 | 615,485 | 94,433,575 | 153.4 |

Average trip length was comparable to 2008 and 2007.