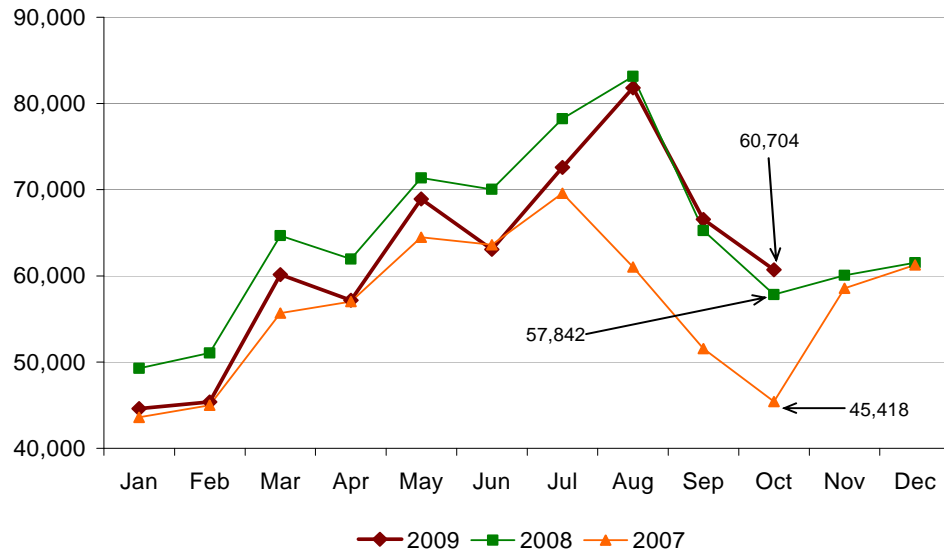


## Amtrak Cascades Monthly Ridership Report – October 2009

### Ridership

#### Passengers



- Ridership numbers for August and September were updated to reflect trains 513 and 516 to/from Vancouver, B.C.

Train #	Train Route	Percent of Change	
		2008 to 2009	2007 to 2009
500	Eugene to Seattle	2.3	27.9
501	Seattle to Portland	3.1	48.0
504	Eugene to Portland	-9.4	3.9
506	Portland to Seattle	2.2	8.1
507	Seattle to Eugene	6.2	12.3
508	Portland to Seattle	-7.5	44.1
509	Seattle to Eugene	-2.7	43.2
510	Seattle to Vancouver, BC	-3.7	-3.5
513	Vancouver, BC to Portland	25.3	99.7
516	Portland to Vancouver, BC	16.0	66.4
517	Vancouver, BC to Seattle	-3.3	-4.4
Bus	Seattle to Bellingham	16	N/A

- Overall ridership increased 4.9 percent from 2008, and 33.7 percent from 2007.

<b>Types of Delays</b>	<b># of Incidents</b>
Equipment Failures	3
Track Work – British Columbia*	4
Track Work – Oregon*	13
Track Work – Washington*	12

\*Track work was scheduled from October 6-11 and 23-25.

## Monthly Ridership per Funding Agency

Amtrak *Cascades* operations are funded by the states of Washington and Oregon and Amtrak. This table provides a breakdown per funding agency.

<b>Agency</b>	<b>October</b>		
	<b>2009</b>	<b>2008</b>	<b>2007</b>
Washington Funded Trains	42,000	39,025	31,195
Oregon Funded Trains	8,813	9,132	6,541
Amtrak Funded Trains	9,891	9,685	7,682
<b>Route Totals</b>	<b>60,704</b>	<b>57,842</b>	<b>45,418</b>

## Year-to-Date (YTD) Summary

<b>YTD</b>	<b>Ridership</b>	<b>Passenger Miles</b>	<b>Ave. Trip Length (miles)</b>
2009	620,936	96,043,408	154.7
2008	652,812	100,664,469	154.2
2007	556,925	85,392,884	153.3

*Average trip length was slightly longer when compared to 2008 and 2007. This could be because of the extension of trains 513 and 516 to/from Vancouver, B.C.*