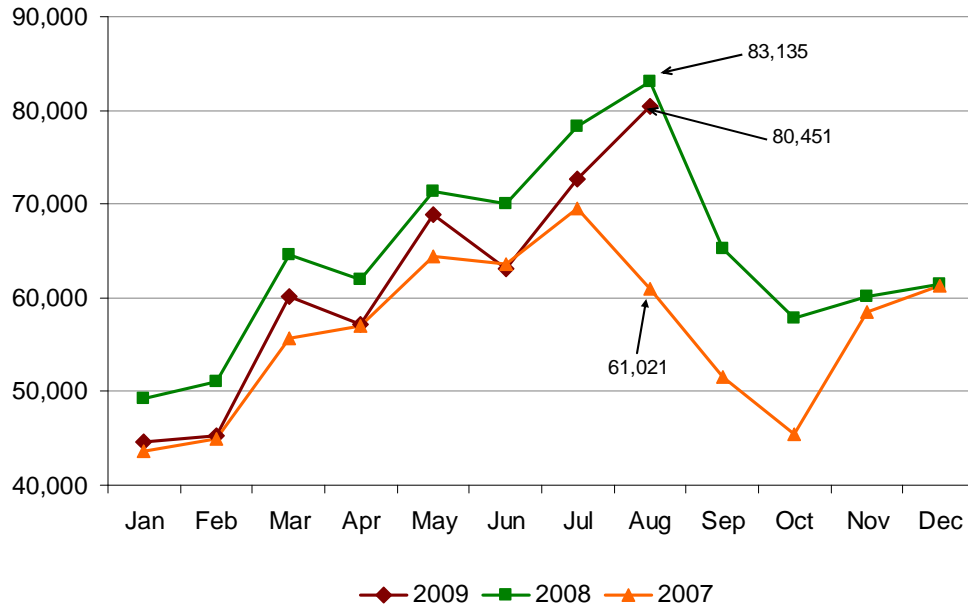




# Amtrak Cascades Monthly Ridership Report – August 2009

## Ridership

### Passengers



Train #	Train Route	Percent of Change	
		2008 to 2009	2007 to 2009
500	Eugene to Seattle	-4.2	20.6
501	Seattle to Portland	-7.7	45.2
504	Eugene to Portland	-42.7	-0.6
506	Portland to Seattle	-2.4	9.3
507	Seattle to Eugene	-4.4	19.3
508	Portland to Seattle	-15.0	25.2
509	Seattle to Eugene	-6.1	29.9
510	Seattle to Vancouver, BC	45.9	47.3
513	Vancouver, BC to Portland	-6.0	72.3
516	Portland to Vancouver, BC	-7.6	45.1
517	Vancouver, BC to Seattle	30.9	34.8
Bus	Seattle to Bellingham	10.1	N/A

\* Overall Amtrak Cascades ridership decreased 3.2 percent from 2008, but increased 31.8 percent from 2007.

- \* Train **516** from Portland to Bellingham was extended to Vancouver, B.C. effective August 19; and train **513** from Bellingham to Portland now departs from Vancouver, B.C., effective August 20.
- \* From August 23-31, Amtrak *Cascades* service did not operate between Portland and Eugene due to Union Pacific Railroad track work.

Types of Delays	# of Incidents
Equipment Failures	3
Police Investigation	1
Track Work	9
Vandalism	2

## Monthly Ridership per Funding Agency

Amtrak *Cascades* operations are funded by the states of Washington and Oregon and Amtrak. This table provides a breakdown per funding agency.

Agency	August		
	2009	2008	2007
Washington Funded Trains	57,172	56,830	42,760
Oregon Funded Trains*	9,736	13,074	7,587
Amtrak Funded Trains	13,543	13,231	10,674
<b>Route Totals</b>	80,451	83,135	61,021

- \* From August 23-31, Amtrak *Cascades* service did not operate between Portland and Eugene due to Union Pacific Railroad track work.

## Year-to-Date (YTD) Summary

YTD	Ridership	Passenger Miles	Ave. Trip Length (miles)
2009	492,305	75,713,453	153.8
2008	529,729	81,647,155	154.1
2007	459,944	70,600,657	153.5

Average trip length was comparable to 2008 and 2007.