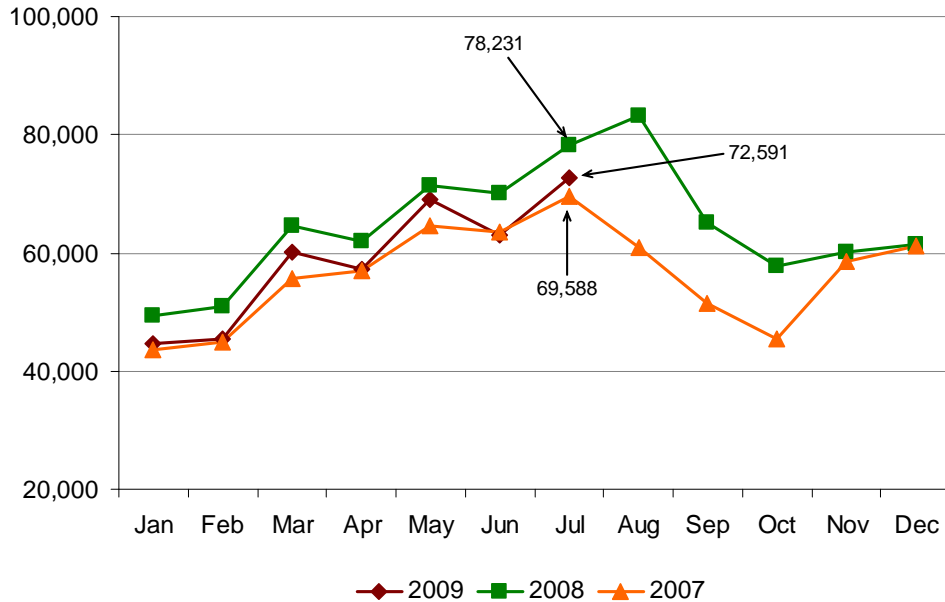




Amtrak Cascades Monthly Ridership Report – July 2009

Ridership

Passengers



Train #	Train Route	Percent of Change	
		2008 to 2009	2007 to 2009
500	Eugene to Seattle	-8.0	6.7
501	Seattle to Portland	-8.6	22.5
504	Eugene to Portland	-23.3	-20.7
506	Portland to Seattle	-4.4	3.5
507	Seattle to Eugene	-8.5	9.4
508	Portland to Seattle	-7.0	-2.7
509	Seattle to Eugene	-7.6	14.9
510	Seattle to Vancouver, BC	5.0	3.4
513	Bellingham to Portland	-4.8	6.2
516	Portland to Bellingham	-10.3	-2.5
517	Vancouver, BC to Seattle	-2.7	-2.0
Bus	Seattle to Bellingham	-29.5	N/A

- Overall ridership decreased 7.2 percent from 2008, but increased 4.3 percent from 2007.

- Given the current state of the economy, ridership has held up very well.
- Amtrak Superliner equipment is being used for trains **510** and **517** and is operating with its original schedule.

Types of Delays	# of Incidents
Equipment Failures	4
Track Work	3

Monthly Ridership per Funding Agency

Amtrak *Cascades* operations are funded by the states of Washington and Oregon and Amtrak. This table provides a breakdown per funding agency.

Agency	July		
	2009	2008	2007
Washington Funded Trains	50,266	52,875	47,802
Oregon Funded Trains*	10,442	12,992	11,073
Amtrak Funded Trains**	11,883	12,364	10,713
Route Totals	72,591	78,231	69,588

The numbers reported in June were incorrect for 2007 and 2008. A corrected table is provided below.

Agency	June		
	2009	2008	2007
Washington Funded Trains	43,811	47,178	43,027
Oregon Funded Trains*	7,571	11,115	9,835
Amtrak Funded Trains**	11,679	11,756	10,735
Route Totals	63,061	70,049	63,597

* Represents trains **500** and **504** (EUG-PDX), and **507** and **509** (PDX-EUG).

** Represents trains **500** (PDX-SEA) and **509** (SEA-PDX).

Year-to-Date (YTD) Summary

YTD	Ridership	Passenger Miles	Ave. Trip Length (miles)
2009	411,854	63,216,721	153.5
2008	446,594	68,679,209	153.8
2007	398,923	61,336,071	153.8

Average trip length was comparable to 2008 and 2007.