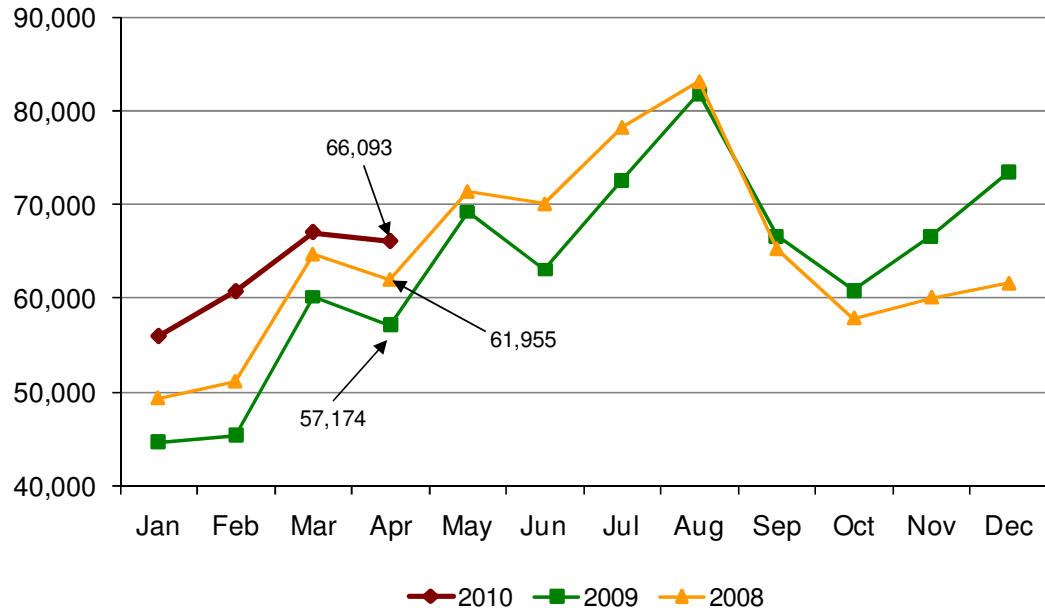


Amtrak *Cascades* Monthly Ridership Report – April 2010

Ridership – Record Monthly Ridership for April

Passengers



Monthly Ridership per Funding Agency

Amtrak *Cascades* operations are funded by the states of Washington and Oregon and Amtrak. This table provides a breakdown per funding agency.

Agency	April		
	2010	2009	2008
Washington Funded Trains	45,569	38,543	42,651
Oregon Funded Trains	9,485	8,933	9,195
Amtrak Funded Trains	11,039	9,698	10,109
Route Totals	66,093	57,174	61,955

Year-to-Date (YTD) Summary

YTD	Ridership	Passenger Miles	Ave. Trip Length (miles)
2010	249,866	39,481,920	158.0
2009	207,312	31,852,532	153.6
2008	226,984	34,846,072	153.5

Monthly Ridership by Train

Train #	Sponsored By	Route	Ridership	Percent Change 2009 to 2010
500	Amtrak	Portland to Seattle	5,513	12.9
	Oregon	Eugene to Portland	2,399	5.1
501	Washington	Seattle to Portland	4,889	26.4
506	Washington	Portland to Seattle	6,431	13.9
504	Oregon	Eugene to Portland	2,748	13.0
507	Washington	Seattle to Portland	4,908	13.1
	Oregon	Portland to Eugene	2,315	-0.6
508	Washington	Portland to Seattle	4,940	17.9
509	Amtrak	Seattle to Portland	5,526	14.7
	Oregon	Portland to Eugene	2,023	7.1
510	Washington	Seattle to Vancouver, BC	3,413	4.7
513	Washington	Vancouver, BC to Portland	9,186	27.7
516	Washington	Portland to Vancouver, BC	8,801	22.9
517	Washington	Vancouver, BC to Seattle	3,001	4.1
Bus*	Washington	Seattle to Bellingham	1,784	21.0

* Actual ticket lift.

Train Disruptions

Types of Disruptions	# Trains/Disrupted	# Days/Disrupted	Location
Mechanical Failures	2	2	OR

Station On-Offs*

April	On	Off	Total
Vancouver, BC	4,123	4,408	8,531
Bellingham	2,508	2,548	5,056
Mount Vernon	657	682	1,339
Stanwood	168	198	366
Everett	2,013	1,806	3,819
Edmonds	1,265	1,187	2,452
Seattle	24,554	23,801	48,355
Tukwila	966	1,052	2,018
Tacoma	5,502	5,631	11,133
Olympia/Lacey	2,603	2,661	5,264
Centralia	1,018	981	1,999
Kelso/Longview	1,018	991	2,009
Vancouver, WA	3,915	4,117	8,032
RailPlus**	46	46	92
Portland	25,531	25,316	50,847
Oregon City	325	322	647
Salem	2,153	2,243	4,396
Albany	1,516	1,430	2,946
Eugene	4,066	3,981	8,047
Unidentified	3,975	3,975	7,883
Total Passengers	87,922	87,376	175,298

* Station On-Offs are used to record how many passengers got on the train or got off the train at each station.

** RailPlus - passengers transferring from Sound Transit to Amtrak Cascades.