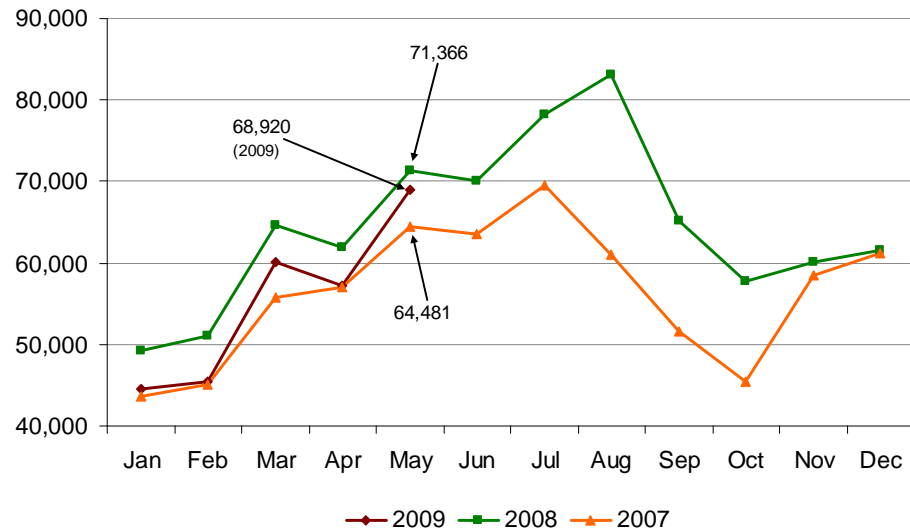




# Amtrak Cascades Monthly Ridership Report – May 2009

## Ridership

### Passengers



Train #	Train Route	Percent of Change	
		2009 vs. 2008	2009 vs. 2007
500	Eugene to Seattle	-3.6	6.7
501	Seattle to Portland	-6.8	18.2
504	Eugene to Portland	-19.8	-19.7
506	Portland to Seattle	-4.7	7.3
507	Seattle to Eugene	-5.7	6.2
508	Portland to Seattle	-12.4	-2.4
509	Seattle to Eugene	-5.8	13.2
510	Seattle to Vancouver, BC	7.4	0.1
513	Bellingham to Portland	3.9	15.5
516	Portland to Bellingham	3.7	14.3
517	Vancouver, BC to Seattle	-1.3	-2.7

- Overall ridership decreased 3.4 percent from 2008, but increased 6.9 percent over 2007.

- Amtrak Superliner equipment is being used for trains **510** and **517** and is operating with its original schedule.
- WSDOT and Amtrak began a new Amtrak *Cascades* connecting bus service on May 12, 2008. May ridership for this new bus service was 1,477. This was a 9.7 percent increase from April 2009. Next month this ridership will be compared to the same month last year.

Types of Delays	# of Incidents
Equipment Failures	6
Amtrak Derailments	0
Non-Amtrak Derailments	2
Freight Delays	1
Nature Delays	2
Collisions (vehicles/pedestrians)	1

## Monthly Ridership per Funding Agency

Amtrak *Cascades* operations are funded by the states of Washington and Oregon and Amtrak. This table provides a breakdown per funding agency.

Agency	2009	2008	2007
Washington Funded Trains	47,124	47,867	43,249
Oregon Funded Trains*	10,332	11,508	11,196
Amtrak Funded Trains**	11,464	11,982	10,036
<b>Route Totals</b>	<b>68,920</b>	<b>71,366</b>	<b>64,481</b>

\* Represents trains **500** and **504** (EUG-PDX), and **507** and **509** (PDX-EUG).

\*\* Represents trains **500** (PDX-SEA) and **509** (SEA-PDX).

## Year-to-Date (YTD) Summary

YTD	Ridership	Passenger Miles	Ave. Trip Length (miles)
2009	276,202	42,279,929	153.1
2008	298,314	45,657,379	153.1
2007	265,738	40,555,906	152.6

Average trip length was comparable to 2008 and slightly more than 2007.