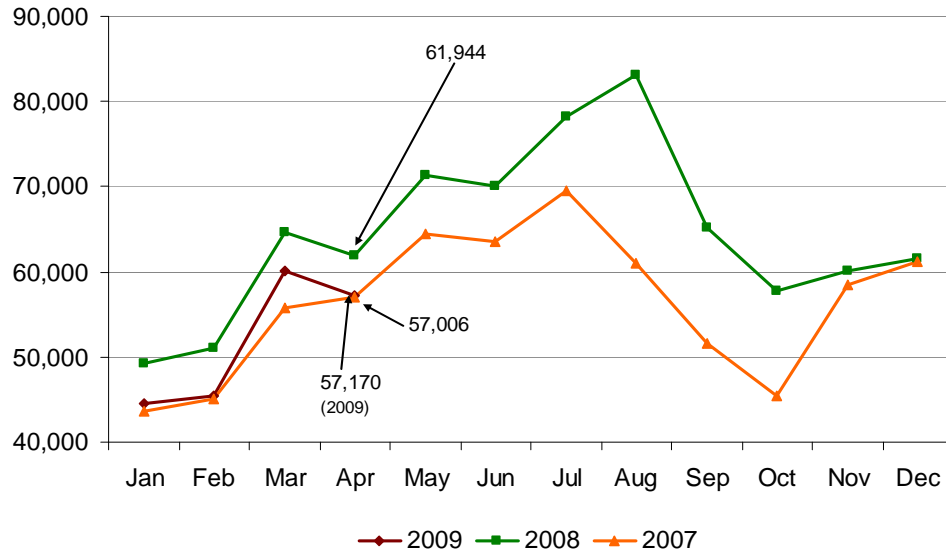




Amtrak Cascades Monthly Ridership Report – April 2009

Ridership

Passengers



Train #	Train Route	Percent of Change	
		2008 to 2009	2007 to 2009
500	Eugene to Seattle	-0.8	1.3
501	Seattle to Portland	-12.6	-0.6
504	Eugene to Portland	-15.0	-10.8
506	Portland to Seattle	-5.7	-0.8
507	Seattle to Eugene	-3.1	8.2
508	Portland to Seattle	-13.7	-7.3
509	Seattle to Eugene	1.2	6.0
510	Seattle to Vancouver, BC	-6.3	-5.4
513	Bellingham to Portland	-17.2	2.1
516	Portland to Bellingham	-9.7	2.6
517	Vancouver, BC to Seattle	-3.7	-8.5

- Overall Amtrak Cascades ridership decreased 7.7 percent over 2008, however, 2009 ridership was still an increase of 0.3 percent over 2007.
- On April 15, train **513** was terminated in Seattle due to locomotive problems and passengers were provided alternate transportation to Portland. As a result of train **513**'s equipment being taken out-of-

service, train **508** was cancelled and alternative transportation was provided for passengers between Portland and Seattle.

- On April 19-20, trains **501** and **504** were cancelled due to track work. Alternative transportation was provided. Train **500** terminated at Portland and alternative transportation was provided from Portland to Seattle.
- Amtrak Superliner equipment is being used for trains **510** and **517** and is operating with its original schedule.
- WSDOT and Amtrak began a new Amtrak *Cascades* connecting bus service on May 12, 2008. April ridership for this new bus service was 1,346. This was a 7.9 percent decrease from March 2009.

Monthly Ridership per Funding Agency

Amtrak *Cascades* operations are funded by Amtrak and the states of Washington and Oregon. This table provides a breakdown per funding agency.

Agency	2009	2008	2007
Washington Funded Trains	38,539	42,640	38,595
Oregon Funded Trains*	8,933	9,195	9,048
Amtrak Funded Trains**	9,698	10,109	9,363
Route Totals	57,170	61,944	57,006

* Represents trains **500** and **504** (EUG-PDX), and **507** and **509** (PDX-EUG).

** Represents trains **500** (PDX-SEA) and **509** (SEA-PDX).

Year-to-Date (YTD) Summary

YTD	Ridership	Passenger Miles	Ave. Trip Length (miles)
2009	207,282	31,852,532	153.7
2008	226,948	34,846,072	153.5
2007	201,257	30,902,675	153.6

Average trip length was comparable to 2008 and 2007.